

Appendices

Contents Page

	Appendix	Page
1	Rights of Way Maintenance Tasks Completed	2
2	Countryside Maintenance Case Study	3
3	Mapping and Enforcement Actions	4
4	Walking for Health Scheme Summary	8
5	Volunteer Rangers Achievements (Southern Shropshire)	10
6	Parish Paths Partnership Case Studies	13



Appendix 1: Rights of Way Maintenance Tasks Completed

Work completed	Totals 16/17	Totals 15/16	Totals 14/15	Totals 13/14
Total individual improvements	916	901	738	635
Wicket/kissing gates installed	214	200	135	85
Wicket/kissing gates repaired	14	9	10	5
Stiles installed / repaired	85	81	76	73
BW/Field gates installed	55	57	28	33
BW/Field gates repaired	36	44	28	30
Signposts	130	112	112	123
Waymark posts	52	69	52	33
Sleeper bridge	23	9	9	11
Kit bridges installed	15	10	7	13
Kit bridges repaired	13	17	13	12
Culverts/drainage (m)	783	1,123	1,510	1,047
Flights of steps	19	18	11	4
Surface repairs (m)	3,051	3,021	6,254	3,391
Clearance metres	43,412	43,342	26,259	30,333
Trees removed	81	86	113	84
Horse stiles	3	2	2	1
Gates replacing stiles	170	155	111	69

Appendix 2: Countryside Maintenance Case Study

The Countryside Maintenance Team were approached by a teacher from Shrewsbury School who had been let down by another organisation in providing a task for their students community week. With only two weeks' notice the team put together a task for the students to complete on the edge of Shrewsbury. The task was to resurface just over 200 metres of path with crushed stone where machinery could not be used.

The result of this chance happenstance is that a larger project is planned for this year with over 40 students potentially involved. We plan to replace several bridges and replace stiles with gates along the River Severn in Alverley, South Shropshire. It is hoped that this is the start of a long association with the school and their community week.

There follows a summary of the event from Tom who worked with the students:

Shrewsbury School

Pupils in Third Form at Shrewsbury School were involved in improving a section of footpath in the Radbrook area. The path was very overgrown and needed a more suitable base for its frequent use.

We set to work clearing the vegetation from the edges so they could see what we were working with. A couple of the Maintenance Team sped up the process by mowing up and down the path. This meant it was all systems go, shovelling, barrowing and raking the first layer of stone, to form a solid base.



The weather was not kind...it pretty much rained all day every day for three days we were there. However, refusing to admit defeat (and the occasional trip to the sweet shop), we ploughed on.



The second and third days had the added bonus of showing the pupils what the previous pupils had achieved. This was helpful as it made it easier to show what was required, and gave them an incentive to better the previous day's work. After all, everything is a competition when you're that age!

Over the course of three days, the full length of path had been dressed with base stone and over half of it had been top-dressed (due to the weather). Even so, this is much more than we thought could be achieved.

A big thank you to the pupils of Third Form for their hard work and positive moral.

Already, there are talks about building bridges with the School – literally! We look forward to future projects with them!

Tom Llewellyn - Outdoor Partnerships Maintenance Officer

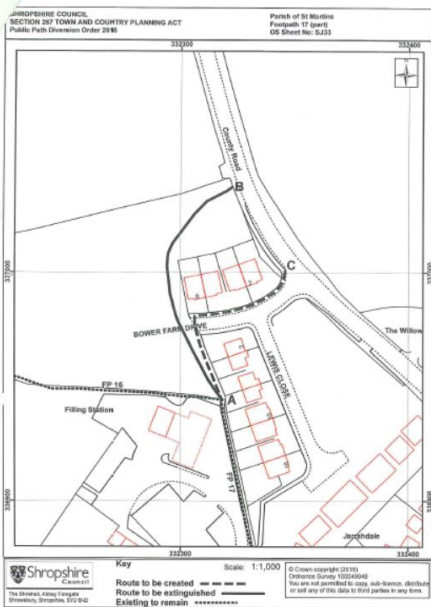
Appendix 3: Rights of Way Mapping and Enforcement Actions

Definitive Map- Public Path Orders



Worthen with Shelve – Creation and Extinguishment Order

A creation and extinguishment order to resolve a very long-standing anomalous route at Tankerville.



St Martins Footpath 17(part) Diversion Order TCPA 1990

A diversion order to enable development to take place but to also maintain access onto connecting routes

These orders provide an income of around **£26,000** per annum.

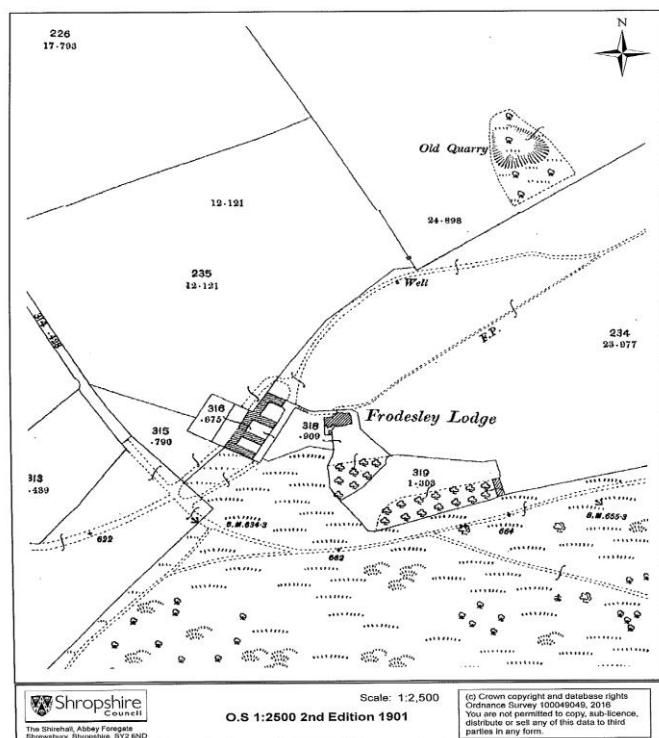
Orders made/confirmed as follows:-

PARISH	ROUTE	ACT	TYPE OF ORDER	DATE ORDER MADE	DATE OF CONFIRMATION
Baschurch	FP 42 (pt)	TCPA 90	Diversion	14/09/16	27/10/16
Hadnall	FP 6 (pt)	TCPA 90	Diversion	07/04/16	07/06/16
St Martins	FP 17 (pt)	TCPA 90	Diversion	26/05/16	21/07/16
Whitchurch	FP 42 (pt)	TCPA 90	Diversion	16/02/17	
Shrewsbury	FP 81	TCPA 90	Diversion	09/02/17	
Caynham	BW 35 (pt)	TCPA 90	Diversion	22/09/16	17/02/17

Chelmarsh	FP 14B (pt)	TCPA 90	Diversion	17/11/16	01/02/17
Prees	FP 38/FP17 (parts)	HA 80	Diversion	08/12/216	
St Martins	FP 19 (pt)	HA 80	Diversion		28/04/16
Alberbury with Cardeston	FP 14 (pt)	HA 80	Diversion		12/01/17
Montford	BW 20/FP20 (parts)	HA 80	Diversion and Creation Agreement	25/08/16	03/11/16
Montford	BW 8(pt)	HA 80	Diversion	03/11/16	12/01/17
Pontesbury	FP 92 (pt)	HA 80	Diversion	23/03/17	
Barrow	Unrecorded BW (Oldpark Farm)	HA 80	Extinguishment		14/04/16
Barrow	BW Creation	HA 80	Creation Order		14/04/16
Cleobury Mortimer/Hopton Wafers	FP 59 (pt)	HA 80	Diversion		09/03/17
Clunbury	BW 10 (pt)	HA 80	Diversion	01/09/16	10/02/17
Hope Bagot	FP UN8 (pt)	HA 80	Extinguishment and Creation Agreement	22/09/16	17/02/17
Worfield	FP 36 (pts)	HA 80	Diversion	28/07/16	29/09/16
Worthen with Shelve	FP 86 (pt)	HA 80	Extinguishment	19/01/16	30/03/17
Worthen with Shelve		HA 80	Creation Order	19/01/16	30/03/17

Definitive Map Modification Orders (Evidential Orders)

Frodesley Modification Order - made in 2010 a Public Inquiry was held from 13-15 September 2016 where an independent Inspector examined all the evidence. The interim decision letter proposes to modify some parts of the order which have received further representations. The Inspector has requested that these are dealt with via the written representation procedure.

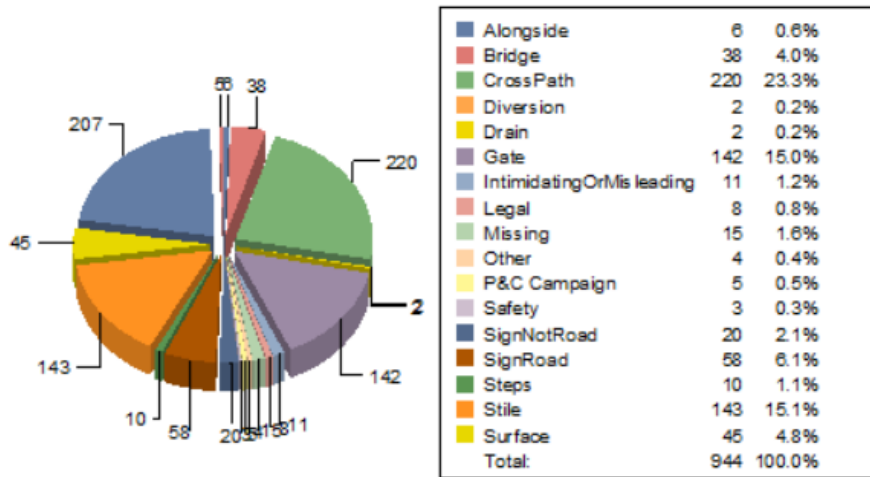


Bridleway Addition Parish of Richard's Castle Modification Order 2015 – made as a result of a formal application supported by user and historical evidence to add a bridleway to link two sections of road known as Mitnell Lane. An objection lodged to the proposed BW addition means it has been forwarded to the Planning Inspectorate for determination. The Inspectorate are hoping to deal with it via the written representation procedure.

ROW Temporary Closure Orders

LOCATION	ROUTE	LENGTH OF CLOSURE	REASON FOR CLOSURE
Kinnerley – alongside River Morda	FP 24 &25	June '16 extended until June '17	Repairs to Flood Embankment
Rushbury –Lakehouse Brook	FP 278	April '16 to Nov '16	Unsafe Bridge
Clee Hill	BW 35	June '16 extended until June '17	Housing development
Rail Crossing, Queensbath Mill, Church Stretton	FP6/7	Four days in July '16	Track replacement at rail crossing
Dudgeley Mill, Church Stretton	FP 9	Three days in July '16	Track replacement at rail crossing
Rush Lane, Market Drayton	BW 8	Sept '16 until Jan '17	Construction of new roundabout off A53 due to housing development
River Severn Towpath, Shrewsbury	FP UN44	Ten days Aug/Sept '16	Removal of scaffolding off severn viaduct
Kenps Eye Ave, Shrewsbury	FP 19	Nov '16 extended until May '17	Footbridge replacement over railway
Moreton St. Prees	FP 17	Jan/Feb '17	Water Main replacement
Prescott Rd, Baschurch	FP 42	Dec '16 until June '17	Housing Development
Rail crossing Wistanstow	FP 50	Nov '16 until May '17	Works to safety of rail crossing
Rail crossing Wistanstow	FP 42	March '17 until Aug '17	Works to safety of rail crossing
Rail crossing Dickenson's Farm, Clive	FP 1	March '17 until Aug '17	Works to safety of rail crossing
Newtown, Much Wenlock	FP 20	Nov '16 until April '17	Much Wenlock
Henley Lane, Acton Scott	FP 21	April/May '17	Water Main replacement

Issue Type across the network



Most complaints relate to cross path issues which are mainly enforcement matters such as barriers across the right of way in the form of fences, hedges, barbed wire, electric fencing, locked gates, crops or routes having been ploughed.

The Mapping and Enforcement Team has an annual letter campaign to try to raise awareness and seek compliance in respect of ploughing and cropping of the Rights of Way network. During 2016-17 this was very successful with only 6 legal notices having to be served.



The second most prevalent complaint relates to issues with furniture such as gates and stiles, which can vary from total replacement to a missing latch or stepboard.

Appendix 4: Walking for Health Scheme Summary

Town	Venue	Ave numbers	Day of the week	Level
Weekly				
Albrighton	Crown	30	Wednesday	Two/Three
Alveley	Post Office	29	Tuesdays	Three
Baschurch	Admiral Duncan	20	Wednesday	Three
Bishop's Castle	Enterprise House	16	Monday	One/ Two
Bridgnorth	Westgate	10	Mondays	Two / three
Bridgnorth	Community Hub	5	Friday	One
Bridgnorth	Low town	12	Wednesday	Three
Broseley	Medical Centre	51	Thursday	Two/three
Chelmarsh	Village Hall	17	Mondays	Two/Three, & Next Steps
Church Stretton	Mayfair Centre	11	Wednesday	Three
Church Stretton	Mayfair Centre	6	Thursday	Two
Church Stretton	Mayfair Centre	14	Wednesday	One
Church Stretton	Mayfair Centre	14	Tuesday	NEXT STEPS
Church Stretton	Mayfair Centre	35	Friday	NEXT STEPS
Clun	Maltings cafe	5	Tuesday	One / two
Craven Arms	Discovery Centre	3	Wednesday	One/Two
Ditton Priors	Church	12	Thursday	Two
Ellesmere	Canal wharf	25	Wednesday	2 and 3, plus 2 hour walk
Hadnall	Village hall	20	Tuesday	1 and 2
Higher Heath	Village Hall	10	Tuesday	2/3
Highley	Severn Centre	17	Mondays	Two/Three
Ludlow	Library	16	Monday	One/Two
Market Drayton	Buttercross	20	Friday	2 and 3
Much Wenlock	The Square	70	Mondays	One/Two/Three, & Next Steps
Oswestry	Cambrian railway building	6	Tuesday	3
Oswestry	Gatacre sports pavilion	6	Tuesday	2
Oswestry	Gatacre sports pavilion	15	Thursday	1 and 2
Rushbury	Rushbury Village Hall	17	Tuesday	Two/Three
Shawbury	Village hall	20	Monday	1 and 2
Shifnal	Village Hall	4	Tuesday	One
Shrewsbury	Abbots Wood Day Centre	18	Thursday	one/two
Shrewsbury	Edgefield Green	5		
Shrewsbury	The Lantern	10	Wednesday	one/two
Shrewsbury	Marden Medical Practice	20	Wednesday	Two
Shrewsbury	Ladies Walk	17	Thursday	Two/Three
Shrewsbury	Pontesbury	35	Friday	One/Two
Shrewsbury	Various (Evening Walks)	17	Tuesday	three
Wem	Edinburgh House	8	Monday	1 and 2
Whitchurch	Civic centre	15	Wednesday	1 and 2
Fortnightly				

Cleobury Mortimer	Sports and Fitness centre	18	Wednesday	One/ Two and Three
Shrewsbury	Various (Saturday Walks)	10	Saturday	three
Shrewsbury	Claremont Bank	8	Tuesday	one/two
Shrewsbury	Hanwood	10	Wednesday	two/three
Shrewsbury	Haughmond Hill	10	Friday	Three
Shrewsbury	STFC	5	Mondays	Two
Ashford Carbonell	Village Hall	9	Thursday	Two
Ludlow	Upper Fee Housing	5	Wednesday	NEXT STEPS
Monthly				
West Felton	Village Hall	7	Monday	2 and 3
Rushbury	Rushbury Village Hall	10	Sunday	NEXT STEPS

Total number of active volunteers on Countryside Sites in South Shropshire = 151

Total number of volunteering hours in 2016 – 2017 = 11190

Severn Valley Country Park (Alveley)

With the help of our volunteers we were successful in attaining the Green Flag Award for the 13th consecutive year. Our volunteers have grown in number over the past twelve months and now we have on average 20 – 25 people attending our Tuesday group. We have now reached the stage where we are unable to take any new recruits on Tuesdays and have therefore set up a second day of volunteering on Thursdays. This group has only be going for three months and already we have six



regular volunteers. The Thursday group also carry out work at other countryside sites in South Shropshire and support other volunteer groups on a regular basis. The volunteer group have helped country park staff with a number of large events over the last year including the Severn Valley Trail Run, to which over 300 runners attended and in September over four days managed visitors to the park when the Flying Scotsman locomotive visited. These four days were the busiest in the parks history and we were most grateful to our volunteers who managed overflow car parking and ran a shuttle bus to the railway. We have established a small group of education and event volunteers who help us with school visits, guided walks and outdoor theatre. We continue to support student placements which range from week long placements to a full year of work experience.

The country park was awarded the Bees Needs Champions Award for creating over 12 acres of pollen-rich hay meadows at Severn Valley Country Park in Alveley and Highley. The Minister for Rural Affairs and Biosecurity, Lord Gardiner, presented the award to the local authority at a high-profile event at Kew Gardens in London on Tuesday 8th November. Areas of coal spoil at Severn Valley Country Park have been transformed into species-rich hay meadows covered in native wildflowers. These provide a bumper nectar-source for pollinators. Volunteers have also installed bee hives and trained as bee-keepers, producing local honey. They have also put up nest boxes for solitary bees such as red-mason bees.

In December we found out that the volunteer group had been awarded a grant of £10,000 from the Tesco Bags of Help Scheme. We thank everyone who has voted for us in their local store as your votes have increased the amount awarded to us from £8,000 to £10,000. The money will be used to restore the wetland habitat and bird hide area by opening up views through the reedbed and varying the depth of the water in the wetland. Maybe one day the Bittern may return! Also as part of the scheme a new pond dipping platform will be installed replacing an old wooden one. This is used all year round by school and community groups and will provide a safe area from which to find out about pond life.

In addition to our own volunteers we encourage volunteers from elsewhere to get involved. In April last year we had a group of Geocachers from the West Midlands region volunteer at the park for a morning. This was part of International Cache In, Trash Out Day (CITO) where Geocachers are encouraged to do some volunteering on an open space before going off and finding Geocaches on site. We had 20 people turn up on the day, some from as far away as Kenilworth and Alcester in Warwickshire. They did a fantastic job of cleaning off one of our all ability paths. In just

two hours they cleaned a 20 metre length. One of the participants was in a wheelchair and was very pleased to know that their hard work would benefit other visitors and make their visit more enjoyable. They enjoyed it so much that they have already asked to come back and do more on site soon! We also have corporate groups volunteering at the park including Nationwide Building Society and Severn Trent Water.

Eardington Local Nature Reserve (Nr Bridgnorth)

Over the past few months the volunteers and probation Service have been working hard on a number of projects. The volunteers built a Minibeast hotel out of wooden pallets and items found around the site. They held an open day on Sunday 15th May which was very well attended. There were lots of stalls and guided walks around the site and a chance to meet the volunteers and talk about their work. Probation laid new paths through the woods and cleared an area ready for the installation of a bird hide. The bird hide has now been



installed by the volunteers and is proving to be a very popular addition to the site giving visitors a chance to get good view of the bird life. The bird hide was paid for thanks to a successful grant application completed by the volunteers. In the autumn the meadows were grazed for the first time thanks to partnership working with a local smallholder, the volunteer group and Outdoor Partnership Staff. This has proved to be very successful and it is hoped to repeat this again this year.

Stanmore Country Park (Nr Bridgnorth)

The volunteer group at Stanmore continues to grow and attracts people from neighbouring houses and further afield. The group have been successful in obtaining a grant of £8,000 from the Tesco Bags of Help Scheme to fund improvements to the Country Park. These include new interpretation boards depicting the history the site and paths upgraded for easy access. The natural heritage of the park will also be enhanced. The site was once home to several rare black poplar trees. These were lost in



high winds. The grant will pay for planting an avenue of these amazing trees, as well as a commemorative poppy bed and a community orchard. Work has already started on these projects and the group are holding a number of events for the public and volunteers over the summer. These include a bat walks, green hay strewing and collecting yellow rattle seed from Severn Valley Country Park and installing the new interpretation boards.

Donington Pool Local Nature Reserve (Albrighton)

The volunteer group here now number six regular volunteers and have been joined in the last two months by members of Severn Valley Country Park Thursday group. Our main project over the winter has been to trim and tidy an old field hedge which runs along our boundary in St Cuthbert's Meadow. Material that has been cut from the hedge has been laid to form a dead hedge. A new pond dipping platform is in the process of being built by the



volunteers and this will allow schools and other community groups to study wildlife in our pond dipping pool safely. The nature conservation area will be opened up to the public on the first Saturday of every month from May until September and volunteers will be on hand to give information and show people round.

Lyth Hill Countryside Site (Bayston Hill)

The new group at Lyth Hill continues to go from strength to strength. Volunteers have been opening up old footpaths that were over run with brambles, cut back path edges to widen paths for visitors and made many repairs to fencing around the site. New stiles have been put in to make access easier and new a new toposcope has been installed at the Viewpoint Car Park with help from volunteers from Severn Valley Country Park. The number of volunteers at Lyth Hill has increased and there are now at least two days of volunteering taking place every two weeks.



New and Reinvigorated P3 Groups – Hadnall P3

One of the earliest new groups to form this year was in Hadnall, a parish with a great community spirit with many local groups already existing there, including a regular Walking for Health scheme. Indeed, it was through the WFH group that the need to keep paths around Hadnall open was identified so they had a variety of routes to use. The group's aim is to keep the footpaths in the Parish kept open and passable during the summer months and address repairs and improvements during the winter months.



The first work day went ahead in May 2016 where a section of the Shropshire Way was becoming particularly overgrown. The Shropshire Way passes through the village and is very popular with walkers and dog-walkers from the village as well as those from further afield and is regarded as a priority by the group. Nine volunteers worked hard in the sun to cut the hawthorn hedge back, remove the debris and also strim the path to improve access. It seems their efforts did not go unnoticed and just as they were finishing a lady from the house down the lane turned up with cake and cold drinks for of them, such a thoughtful and kind gesture and left everyone on a real high! By the end of 2016/17 the group had contributed 64 volunteer hours between them on the P3 scheme.

New and Reinvigorated P3 Groups – Cockshutt P3

Towards the end of 2016 interest was shown to reform a group in Cockshutt Parish to help maintain and improve access in the village. An initial meeting was set up where a number of enthusiastic locals came to hear about the P3 scheme and discuss issues in the area and options for the group.



A number of issues had already been identified in the village with two in particular being highlighted as a priority, these were on a route which led out from the village hall and was heavily used by locals for recreation. The issues were a dangerous sleeper bridge and stile which were particularly inconvenient for the user. It was decided that this and a subsequent stile should be upgraded to kissing gates which gave the landowner the benefit of better stock control without fear of fencing being cut to allow dog access.

In early February 2017 the new group members came together to replace two stiles and a sleeper bridge and the feedback from the villagers on the improved access has been very positive. Since then two more stiles have been replaced with gates by the group and potential improvements have been negotiated across the Parish which will provide a work programme over the coming year.

In early February 2017 the new group members came together to replace two stiles and a sleeper bridge and the feedback from the villagers on the improved access has been very positive. Since then two more stiles have been replaced with gates by the group and potential improvements have been negotiated across the Parish which will provide a work programme over the coming year.

Many of the group have benefited from some training sessions delivered by Shropshire Outdoor Partnerships covering Rights of Way Law and Practice, installation of countryside kissing gates and a brushcutter course and will put this to use in the future.

Offering a Wider Volunteering Opportunity

Case Study- Volunteer Celebration

Every year, as a thank you and means of recognising the commitment and dedication of our volunteers we hold a celebration day somewhere across the County. On Monday 26th of September 2016 our annual Volunteer Celebration day took place in the wonderful surroundings of Nesscliffe Village Hall. Nearly 80 volunteers from across the service including; Volunteer Rangers, P3 Volunteers and Shropshire Wild Team members, came together to hear presentations, participate in activities, enjoy lunch and have the opportunity to network and discuss what they had been up to over the last year.



The day began with a tea and coffee and a welcome from Clare Fildes before the mornings activities began, these included; a fungal foray, 3 walks around Nesscliffe Hill (short, medium and long), a walk around Nesscliffe Training Camp (this was kindly lead by Kinnerley P3 Co-ordinator, Mark Cuthbert-Brown) and a Maintenance Team “hands on” step replacement activity. All groups then returned to the hall for the traditional volunteer buffet.

After dinner there was a presentation by the Outdoor Partnership Team highlighting some of the achievement made over the year with the help of the volunteers. For something different this year a talk by local Author Remy Dean on Shropshire folklore was delivered and was well received by all. The day was a great success and plans are already underway to deliver this year’s event.